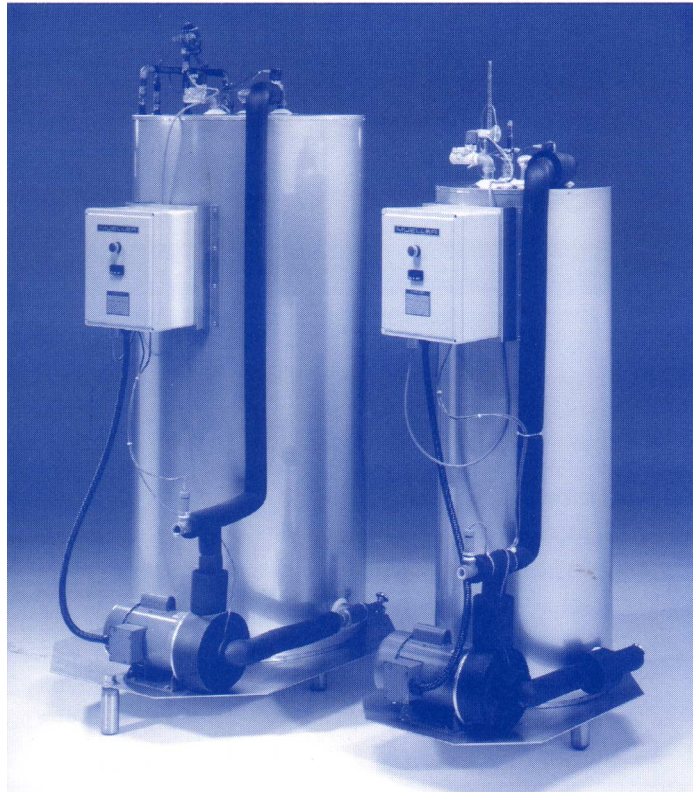


BATCH COOLING WATER CHILLERS FOR BAKERY APPLICATIONS



PROVIDING AUTOMATIC WATER TEMPERATURE CONTROL
FOR THE MODERN BAKING INDUSTRY

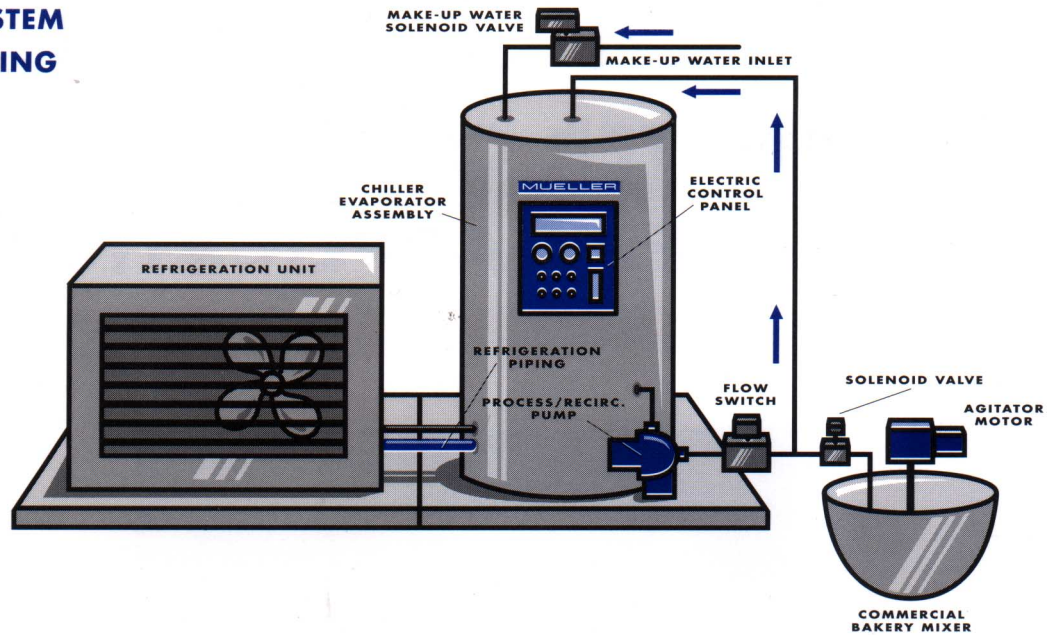
Standard Features:

- ▲ Outlet temperatures down to 36 °F.
- ▲ For up to 70 gallons of chilled water per hour
- ▲ 50- and 120-gallon storage capacities available
- ▲ Batch draw-off flow rates from 5 to 18 gallons per minute
- ▲ Inlet temperatures up to 80 °F
- ▲ Process/recirculation pump standard
- ▲ Integrated or remote condensing units
- ▲ Adjustable digital temperature control with °F or °C display
- ▲ ETL listed

MUELLER

REFRIGERATION PRODUCTS

TYPICAL SYSTEM LAYOUT/PIPING DRAWING



TECHNICAL SPECIFICATIONS

Model No.	GPH*	lbs. Per Hour	Storage Capacity (gal)	Draw-Off Flow Rate (gpm)	Condensing Unit Type	Condensing Unit HP	Electrical Data	Est. Shipping Weight (lbs)	Est. Dimensions L x W x H (in)
PMC 25/50-PC	25	208	50 gallon	5	Indoor	2	208-230/60/1	440	32 x 24 x 72
PMC 25/50-RC	25	208	50 gallon	5	Outdoor	2	208-230/60/1	300	32 x 24 x 72
PMC 40/50-PC	40	334	50 gallon	14	Indoor	2	208-230/60/1	440	32 x 24 x 72
PMC 40/50-RC	40	334	50 gallon	14	Outdoor	2	208-230/60/1	300	32 x 24 x 72
PMC 40/50-RS	40	334	50 gallon	14	None	-	208-230/60/1	300	32 x 24 x 72
PMC 70/120-PC	70	584	120 gallon	18	Indoor	3.5	208-230/60/1	925	82 x 34 x 84
PMC 70/120-RC	70	584	120 gallon	18	Outdoor	3.5	208-230/60/1	705	42 x 34 x 84
PMC 70/120-RS	70	584	120 gallon	18	None	-	208-230/60/1	705	42 x 34 x 84

*GPH capacities are based on a minimum water refill rate of at least 8 gpm, and on drawing evenly sized and spaced batches each hour

PERFORMANCE SPECIFICATIONS

OUTLET TEMPERATURE CHART			
Model No.			
	25/50	40/50	70/120
Inlet Temp. (gph*/storage)	(gph*/storage)	(gph*/storage)	(gph*/storage)
60 °F	42 °F	36 °F	36 °F
70 °F	44 °F	38 °F	36 °F

* GPH capacities are based on a minimum water refill rate of at least 8 gpm, and on drawing evenly sized and spaced batches per hour.

MUELLER

ENVIRONMENTAL PROCESS SYSTEMS LIMITED
 Unit 32, Mere View Industrial Estate, Yaxley,
 Cambridgeshire, PE7 3HS, UK
 Tel: +44 (0)1733 243400 Fax: +44 (0)1733 243344
 email: info@epsLtd.co.uk www.epsLtd.co.uk

